



city of

Wetaskiwin



TOURIST GUIDE

55 AVENUE



WWW.WETASKIWIN.CA

Discover Wetaskiwin

Wetaskiwin is a City with a growing population of 12,621 and over 700 businesses; the City offers all urban amenities with the charm of a small town. Whether you know us as a city where “Cars cost less” or home to the Reynolds-Alberta Museum, one thing is for sure, Wetaskiwin welcomes you to an adventure. Take in the Rawhide Rodeo or dance to the music at the Loonstock Music Festival. Visit the Wetaskiwin and District Heritage Museum, the Reynolds- Alberta Museum and Canada's Aviation Hall of Fame. Enjoy a show at the Manluk Performing Arts Theatre. Feeling adventurous? Take a rare flight in the open cockpit of a Biplane. Looking for family fun? Surf the Board Rider at the Manluk Aquatic Centre. The Edmonton International Raceway, located in Wetaskiwin, hosts the NASCAR 300 lap race. Whatever your pleasure - there is an experience for everyone in one of Alberta's oldest cities. Visit our website for local events happening in the community, www.wetaskiwin.ca.

MUSEUMS 4

Reynolds-Alberta Museum	6
Canada's Aviation Hall of Fame	8
Wetaskiwin & District Heritage Museum	10
Alberta Central Railway Museum	12
Historic City Hall Tours	14
Wetaskiwin Archives	14

HISTORICAL POINTS OF INTEREST 16

LEISURE & ATTRACTIONS 22

MAP OF WETASKIWIN 28

ACCOMODATIONS 38

RESTAURANTS 42

EXCITING EXCURSIONS 46

VISITORS INFORMATION 48

MUSEUMS



Wetaskiwin is proud to boast of our museums such as the international award-winning Reynolds-Alberta Museum, Canada's Aviation Hall of Fame, the Wetaskiwin and District Heritage Museum, and the Alberta Central Railway Museum. In addition to the museums, there is plenty to do and discover in Wetaskiwin.



Overview

Reynolds-Alberta Museum

6426-40 Avenue

2 km west on Highway 13

P: 780-312-2065

E: reynoldsalbertamuseum@gov.ab.ca

www.reynoldsalbertamuseum.com

Canada's Aviation Hall of Fame

6426-40 Avenue

2 km west on Highway 13

P: 780-361-1351

www.cahf.ca

Wetaskiwin and District Heritage Museum

5007-50 Avenue

P: 780-352-0227

www.wetaskiwinmuseum.com

Alberta Central Railway Museum

40 Avenue east to Sec. Hwy. 822

P: 780-352-2257

E: acrm@xplornet.com

www.abcentralrailway.com

Caretaker's Suite/Tours

Wetaskiwin's Historic City Hall

4705-50 Avenue

P: 780-361-4417

Wetaskiwin Archives

4904-51 Street

P: 780-361-4423

Tues – Thurs 9am – 3pm

www.wetaskiwin.ca/archives





REYNOLDS-ALBERTA MUSEUM
Celebrating the
Spirit of the Machine



Reynolds-Alberta Museum

Visit Canada's finest and largest collection of rare, unusual and one-of-a-kind cars, airplanes, tractors and industrial equipment, from 1880 through to today. Be part of the action at this international award-winning museum of mechanization! In summer, cruise the grounds in a chauffeur-driven vintage vehicle, or soar like an eagle in an open cockpit biplane.

Year round, check out new exhibits, watch a film in the **Drive-In Theatre**, visit the **Children's Farm House**, or see what's being restored by the professionals in the **Restoration Shop** and **Conservation Lab**.

When You Visit

- admission is charged
- group rates are available
- open year round
- 10:00 am to 5:00 pm
(closed on Mondays from September through May (except for holiday Mondays)
closed December 24 & 25 & January 1)

How to Reach Reynolds-Alberta Museum

6426-40 Avenue

2 kms west on Highway 13

P: 780-312-2065

www.reynoldsalbertamuseum.com





Keeping our aviation heroes,
leaders and innovators in the
hearts and minds of Canadians.



Canada's Aviation Hall of Fame

Enjoy a self-guided tour through the Reynolds-Alberta Museum's Aviation Hanger, and learn about the contributions made by more than 200 of Canada's flying elite. These stories of individuals who pioneered and advanced aviation and aerospace in Canada are captured through biographical panels, documents and aviation memorabilia.

Canada's Aviation Hall of Fame is the on-site partner of the Reynolds-Alberta Museum.

How to Reach Canada's Aviation Hall of Fame

6426-40 Avenue
2 km west on Highway 13
P: 780-361-1351
www.cahf.ca





Experience local history at the Heritage Museum as you sit in an authentic tipi, journey down our County roads, learn about Wetaskiwin's early businesses, glimpse into life on a Hutterite colony, and so much more.



Wetaskiwin and District Heritage Museum

Discover your Heritage Today!

The award-winning Heritage Museum, in the heart of our historic downtown, provides the opportunity to uncover local history through three floors of interactive displays, ongoing programs, and special events for all ages. Engage with real artifacts in the one-of-kind **Pioneer Play Rooms**. Share in the lives of the extraordinary **Women of Aspenland**. Uncover the dynamic heritage of our City, County, and Maskwacis Four Nations with displays that span from the time of the dinosaurs to the War Years. Visit the Heritage Museum today where history never gets old!

Hours

- Tues – Sat, 10:00 am – 5:00 pm (Summer)
- Tues – Fri, 10:00 am – 5:00 pm (Winter)
- Admission: By Donation

How to Reach

Wetaskiwin and District Heritage Museum

5007 – 50th Avenue
(in the Heart of Main Street)
P: 780-352-0227
E: wdhm@persona.ca
www.wetaskiwinmuseum.com





Ride the rails and learn the history of railroading before 1965 at the Alberta Central Railway Museum. Enjoy train rides, self-guided rail car tours and a meal in the dining car.



Alberta Central Railway Museum

Get On Track With History at the Alberta Central Railway Museum where you can wait for the train in a typical country station with waiting room, baggage room and telegraph office. Then take your pick of an exciting ride on the day liner or a vintage train. A scale layout of the 1930s Wetaskiwin railway yard shows you how railway was central to our prairie towns.

The museum has a collection of Canadian Pacific rolling stock, heavy weight cars from the passenger era, freight equipment, cabooses, freight cars, and a snowplow.

Admission & Fares

- Open May to September
 - Wednesday to Sunday/Holiday Mondays
10:00 am - 4:00 pm
 - Adults: \$5.00
 - Students 6 to 17: \$4.00
 - Children 3 to 5: \$2.00
 - Children 2 and under: Free
- * Different rates apply on Railway Day – Aug 16th
- Train Rides: \$4.00
 - Train runs at 1:30 p.m. and 3:00 p.m

How to Reach Alberta Central Railway Museum

40 Avenue east to Sec. Hwy. 822

P: 780-352-2257

E: acrm@xplornet.com

www.abcentralrailway.com





Conserving, preserving, and
safeguarding the past to make it
available now and for the future.



Caretaker's Suite & Jail Cell Tours

Located in the basement of Historic City Hall is the Caretaker's Suite. The caretaker was responsible for the care and maintenance of the entire building in the early 1900s. The caretaker's wife, in addition to looking after her family, cooked meals for the prisoners when needed. In 2007, when the building was refurbished for City Hall, the Wetaskiwin Heritage Museum created a satellite exhibit by restoring the suite to depict life in the 1940s.

The original jail cells of the Courthouse remain in the basement of Historic City Hall. Carved words and phrases can be seen on some of the bricks in the walls of the cells.

How to book a tour:

Historic City Hall

4705-50 Avenue

Wetaskiwin

Tours take place on Friday's

from 1:00 pm – 4:00 pm

Tours must be pre-booked by calling

780-361-4417

Wetaskiwin Archives

Find documents and photographs from as far back as the 1890s or trace your family history using tax, school or cemetery records. Search for a picture of your great-grandfather among the more than 100,000 photographs from various collections.

How to Reach Wetaskiwin Archives

4904-51 Street

P: 780-361-4423

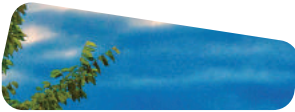
Tues – Thurs 9am – 3pm

www.wetaskiwin.ca

HISTORICAL POINTS OF INTEREST



Wetaskiwin is one of Alberta's oldest cities. We invite you to explore our history and culture as you walk downtown or view the 140' tall water tower from its base on the hill.



50 STREET

Overview

Historic City Hall

Discover the history behind
Wetaskiwin City Hall.
4705-50 Avenue
www.wetaskiwin.ca

Historic Downtown Walking Tour

Take a self-guided walking tour
of historic downtown.
50 Avenue "Mainstreet"

Historic Water Tower

Learn about Wetaskiwin's historic water
tower—one of the oldest in Alberta.
5003-56 Street (Automile)

Wetaskiwin Peace Cairn

Learn about the Peace Cairn that
commemorates sixty years of peace between
the Blackfoot and the Cree Nations.
4910-55A Street





Historic City Hall

Historic Wetaskiwin City Hall is a great example of old meets new.

The original structure was built in 1907 and served as the Wetaskiwin Courthouse from 1907 to 1983. It is constructed of solid red brick over a concrete and rubble foundation. In 2007 the building became Wetaskiwin's new city hall. To accommodate city hall, glass additions were added to each side of the original structure and extensive renovations were done to the inside of the building.

Book your tour of this magnificent structure by calling 780-361-4417

How to Book Tours:

Historic City Hall / Caretaker's Suite
& Jail Cell Tours
4705-50 Avenue
Wetaskiwin

Tours take place on Monday - Friday
between 9:00am - 4:00 pm
Tours must be pre-booked by calling
780-361-4417



Historic Downtown Walking Tours

Wetaskiwin's historic downtown features thirteen turn-of-the-century buildings restored to their original splendor, giving the downtown a historic yet modern look. Experience the richness of Wetaskiwin's heritage by taking the self-guided walking tour of the downtown core. Buildings with historical significance have a plaque attached to the outside providing fascinating details of the building's history.

A self-guided tour brochure is available at the Visitor Information Centre, 4910-55A Street and at the Wetaskiwin Heritage Museum, 5007-50 Avenue.





Historic Water Tower

Driving into Wetaskiwin from any direction, the 10-storey water tower is one of the first visible signs of the city. Built in 1909, Wetaskiwin's water tower is one of the oldest municipal water towers in Canada. The 42-metre-high structure has towered above Wetaskiwin since 1909. In 2004, Wetaskiwin City Council considered the possibility of demolishing the water tower, but concerned citizens convinced them the old tower was worth saving. Work to refurbish the tower began in 2005, and by 2006 the water tower was completely restored. Majestic by day and illuminated by night, the tower serves as a beacon to all who enter the city.

How to Reach the Water Tower

4910-55A Street

www.wetaskiwin.ca

**The Historic Water
Tower holds over
400,000L of Water!**



Wetaskiwin Peace Cairn

The Peace Cairn was erected to commemorate sixty years of peace between the Blackfoot (Niitsitapi) and Cree (Nehiyawak) nations. This historic peace pact took place in a group of hills just north of present day Wetaskiwin. These hills are known as the Hills of Peace and the name Wetaskiwin is a derivative of the Cree word Wĭtaskiwinihk, meaning "the hills where peace was made."

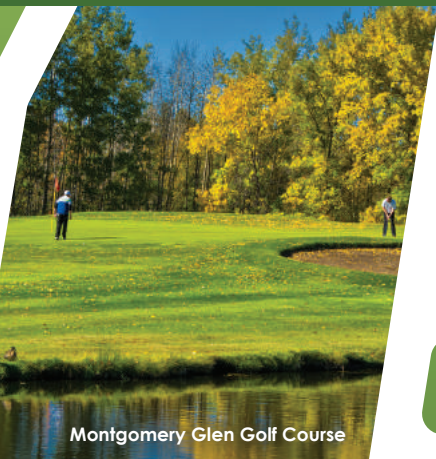
At the time of construction, school children each carried a rock and walked in a procession from their school to the hill where the Cairn was to be erected. The Cairn was officially dedicated during the celebrations for Canada's Diamond Jubilee on July 2, 1927. It is now located adjacent to the Visitor Information Centre at 4910-55A Street, across from the Wetaskiwin Water Tower.

How to Reach the Wetaskwin Peace Cairn

4910-55A Street

www.wetaskiwin.ca

LEISURE & ATTRACTIONS



Montgomery Glen Golf Course

50 STREET

STAY ANOTHER DAY

Drive a race car, fly in an open cockpit biplane, go surfing, take a walk, ride a train, take in a festival, or two or three! The possibilities for fun and excitement are waiting for you in Wetaskiwin.

47 AVENUE



GOLFING

Wetaskiwin is a golfers paradise offering two superb local golf courses and seven others within 35 minutes of Wetaskiwin.

Montgomery Glen Golf and Country Club

Wetaskiwin, AB

Junction Hwy 2A and Hwy 13

P: 780-408-8687 www.countryclubtour.com

Loons Golf Course & RV Resort

Wetaskiwin, AB

2 km east of junction Highway 2A & 13 east

P: 780-352-3300

Black Bull Golf Resort

Ma-Me-O Beach, AB

P: 1-866-586-2254 www.blackbullgolf.com

Dorchester Ranch RV and Golf Resort

Pigeon Lake, AB

P: 1-780-586-2533 www.dorchesterranch.com

Pipestone Links Golf Course

Millet, AB

P: 1-780-352-8788 www.pipestonelinks.com

Pigeon Lake Golf Course

Mulhurst Bay, AB

P: 780-389-3783 www.pigeonlakegolf.com

Triple Creek Golf Club

Millet, AB

P: 780-387-5760 www.triplecreekgoldclub.ca

Willow Greens Golf Resort

Westerose, AB

P: 780-586-2071 www.willowgreensgolf.com



NASCAR RACING

Edmonton International Raceway

Every weekend May — September

This quarter mile paved oval is the only NASCAR sanctioned track in Alberta. Be sure to catch the "Alberta Has Energy 300" NASCAR Canadian Tire Special Event in July. Other race classes include IMCA Canada, INRX Legend Cars, and the Baby Grand Stock Car Association.

Find out more:

P: 780-467-9276

www.edmontonraceway.com

HIGH FLYING ADVENTURE

Wetaskiwin Regional Airport (CEX3)

This Transport Canada Certified airport is one of the busiest in central Alberta. Local aviation businesses and pilots are treated to a welcoming terminal building, well maintained infrastructure, and global positioning system approach procedures.

Elevation 2509 ASL; Runway 3,877 ft

24 Hour ARCAL Type K lighting

24 Hour 100 LL fuel availability

RNAV and NDB approaches

UNICOM: 123.50 mHz

How to reach Wetaskiwin Regional Airport (CEX3)

6301-47 Avenue

P: 780-352-5858

www.wetaskiwin.ca

Biplane Adventures

From May to September, take a vintage open cockpit biplane adventure departing from Reynolds-Alberta Museum. Available daily, weather permitting. 10, 20, and 50 minute tour options are available.

How to reach Reynolds-Alberta Museum

6420-40 Avenue

2km west on Highway 13

www.reynoldsalbertamuseum.com

How to book a flight

Flights are provided by Central Aviation

P: 780-312-2071 780-352-9689

www.reynoldsalbertamuseum.com



By-the-Lake Park

PARKS & TRAILS

Wetaskiwin has an extensive trail system that leads you around the entire city with a direct connection to By-the-Lake Park where you can relax before heading back out onto the trail. You can walk or bike the trails giving you a quiet relaxing view of our great community.

A map of the trail system can be found at www.Wetaskiwin.ca/maps.



Ashoro Park

Ashoro Park

54 Street and 43 Avenue

The Wetaskiwin Ashoro Friendship Park was created in honour of the 20 year relationship with our sister city of Ashoro, Japan. Inspired by Japanese design the park is nestled in a residential area providing a quiet and relaxing atmosphere.

By-the-Lake Park

6128-56 Avenue

A superb day-use facility featuring a 17 acre man-made lake with a 2.5 kilometer paved trail around the lake. A large picnic area makes this an ideal spot to spend a summer afternoon with family and friends.

Diamond Jubilee Park

50 Avenue and 54 Street

Situated in our downtown, Diamond Jubilee Park is home to the cenotaph, a memorial to 'Fallen Comrades' in the Canadian Forces. As one of the oldest parks in Wetaskiwin, you will find some magnificent trees as well as a Heritage Perennial Garden showcasing beautiful perennial plants from members of the community.



Peace Hills Park

**EDMONTON
INTERNATIONAL
RACEWAY**

EDMONTON
(HIGHWAY 2A)

PEACE HILLS PARK

BY-THE-LAKE
PARK

WETASKIWIN
REGIONAL
AIRPORT

REYNOLDS-ALBERTA
MUSEUM
AND HOME OF
Canada's Aviation
HALL OF FAME

VISITOR
INFORMATION

HIGHWAY 13 WEST

MASKWACIS
(HIGHWAY 2A)



AUTOMILE (2A)

56 STREET

MAIN
50 A

AUTOMILE (2A)

56 STREET



CAMROSE
(HIGHWAY 13 EAST)



H



STREET
VENUE

WETASKIWIN
HERITAGE
MUSEUM

CITY
HALL

RECREATION
GROUNDS &
MANLUK CENTRE

40 AVENUE



822



ALBERTA CENTRAL
RAILWAY MUSEUM



*Catch the Wave...
Feel the Excitement*

44,756 Sq Ft. of
WATERTAINMENT



WWW.WETASKIWIN.CA

SURF'N THE PRAIRIES

Who knew you could surf in the middle of Alberta? The Manluk Board Rider combines skill, excitement and fun like no other standing wave attraction. Suitable for all age groups the Board Rider it is a multi-person body board ride, or a full on individual surfing experience.

MANLUK CENTRE

- Leisure pool
- Lazy river
- 25-metre competition pool
- Tots pool, spray park and waterslides
- Board-Rider surf system
- Fitness Facility

Wetaskiwin Regional Aquatics and Fitness

4514-50 Avenue, Wetaskiwin

P: 780-361-4444

www.manlukcentre.ca

www.facebook.com/manlukcentre

www.twitter.com/manlukcentre



ARTS & CULTURE

Caelin Art Gallery

4728-50 Avenue

The gallery showcases the photographic art of Leon Strembitsky and the murals, water colours, oils and music of Colleen McGinnis.

How to reach Caelin Art Gallery

P: 780-352-3519 www.caelinartworks.com

Wetaskiwin Theatre Society

5002-53 Avenue

From "open mic" nights, to musicals and comedy plays, the Wetaskiwin Theatre – Water Works Players will be sure to entertain you.

How to reach Wetaskiwin Theatre Society

P: 780-352-8383 www.wetaskiwintheatresociety.com

Wild West Gallery

Wetaskiwin Mall, 3725-56 Street

Find one of a kind first nations crafts, pendleton blankets, vintage beadwork, jewellery, carvings, etc. A great place to learn about first nations culture and crafting.

How to reach Wild West Gallery

P: 780-352-3520 www.wildwestgallery.ca

Wetaskiwin Allied Arts and Crafts Centre

4520-48 Avenue

Showcasing imagination, creativity, and artistic expression at various art shows throughout the year.

How to reach Wetaskiwin Allied Arts and Crafts Centre

P: 780-352-6048 www.waacc.ca

RECREATION

Wetaskiwin Recreation Grounds

4514-50 Avenue

The Wetaskiwin Recreation Grounds are a year round hub of activity for youth, adults and families. Play a round of tennis or horseshoes, try out the skatepark or watch a football game at night.... whatever your activity you will find it at the Wetaskiwin Recreation Grounds.

Civic Centre Twin Arenas

4514-50 Avenue

The Wetaskiwin Civic Centre is one of our primary recreation facilities and is home to the Wetaskiwin Icemen Jr. B. Hockey Club, the Figure Skating Club, Wetaskiwin Minor Hockey and various other adult/youth sport teams. Visit wetaskiwin.ca for skate schedule.

Baseball Diamonds

Al Arner Diamonds

4513-50 Avenue

Kinsmen Ball Diamond

222 Northmount Drive

Knights of Columbus Diamonds

525 Garden Meadows Drive

Call 780-361-4444 to rent diamonds.

Centennial Diamonds

5302-55 Avenue

Soccer Pitches

Clear Vista School Grounds

4510-47 Street

Norm Brown Field

4513-50 Avenue

Curling Rink

4514-50 Avenue

Wetaskiwin Curling Club

P: 780-352-7088

Disc Golf

A great 18 hole course situated throughout scenic Peace Hills Park 2km west of the junction of Highway 2A and Highway 13 east.

www.albertadiscgolf.com

Skiing

Gwynne Ski Hill

10 km east of Wetaskiwin on Highway 13

P: 780-352-3515

www.wetaskiwinskiclub.ca

Cross Country Skiing

Enjoy the scenery of the beautiful Montgomery Glen Golf Course as you ski the groomed cross-country trails throughout the wintery course.

Montgomery Glen Golf and Country Club

Wetaskiwin, AB

Junction Hwy 2A and Hwy 13

For more information regarding recreation services visit www.wetaskiwin.ca or call 780-361-4444.



MORE FUN THINGS TO DO

Wetaskiwin Cinemas, 4-plex

3840-56 Avenue

P: 780-352-3922

Wetaskiwin Public Library

5002-51 Avenue

P: 780-361-4446

www.wetaskiwinpubliclibrary.ab.ca

Western Lanes Bowling

5013-49 Street

P: 780-352-4705



SHOPPING

Automile

The famous Wetaskiwin Automile, located along Highway 2A is renowned for the advertising jingle "Cars Cost Less in Wetaskiwin". The Wetaskiwin auto dealers are known for great deals and great service, bringing customers from across Alberta and western Canada. But, the Automile doesn't just sell cars ... it is also home to a number of businesses, restaurants, and other services.

"Cars Cost LESS in Wetaskiwin!"



Downtown

Want to enhance your shopping experience? Visit our downtown where you will find shops located in turn of the century buildings. We have gift shops, specialty clothing, home furnishings, sportswear, and novelty shops located within a three block area. You can also do your banking or stop for lunch at one of our downtown restaurants.

Wetaskiwin Mall

The Wetaskiwin Mall is an enclosed shopping centre. With ample parking and an excellent location, it is directly off Highway 2A. The Mall is currently home to 25 retailers, including Dollarama, Sport Chek, Pet Valu and Giant Tiger.

ACCOMMODATIONS



Best Western Wayside Inn

48 STREET

Coming to Wetaskiwin? Be sure to book your stay at one of our fabulous hotels, or campgrounds. Enjoy your stay in a quiet hotel room, or enjoy the sounds of nature in a trailer or tent.

47 AVENUE



HOTEL/MOTELS

Best Western Wayside Inn

4103-56 Street

Enjoy a quiet, comfortable stay at the Best Western Wayside Inn. Conveniently located on the famous Automile and minutes away from the Reynolds-Alberta Museum. The Best Western Wayside Inn is home to O'Brian's Restaurant and Barney's Pub and Grill.

P: 780-312-7300 / 1-877-358-6177

www.bestwestern.com

** Each Best Western Hotel is independently owned and operated.*

Super 8

3820-56 Street

Don't worry about the kids when you stay at the Super 8. The new pool, waterslide and jacuzzi will keep the whole family having fun during your visit to Wetaskiwin. Get going in the morning with a complimentary Super Start Continental Breakfast at Wetaskiwin's Super 8.

P: 780-361-3808 / 1-800-454-3213

www.super8.com

Alberta Inn & Suites

4814-56 Street

Enjoy reasonably priced accommodations, convenient shopping and some of the best coffee in Alberta at the beautiful Alberta Inn and Suites, located just south of Main Street on the Automile.

P: 780-352-2222

www.albertainn.ca

Wetaskiwin Motel

4814-56 Street

Clean and comfy rooms for your enjoyment.

P: 780-352-7141



CAMPGROUNDS

Wetaskiwin Lions Campground

2.4 km east of junction Hwy 2A & Hwy 13 east
P: 780-352-3321





By-the-Lake Park

Prairie Breeze Inn RV & Camping

Highway Street, Wetaskiwin, AB
P: 780-352-7220

Coal Lake South Park Campground

Gwynne, AB
16 km east of Wetaskiwin on Hwy 13 east
P: 780-352-1830

Pipestone Motel & RV Resort

Millet, AB
15 km north of Wetaskiwin on Highway 2A
P: 780-387-4000

*View campsite information at
www.albertacampsites.com and search "Wetaskiwin".

RESTAURANTS



Whether you're looking for an evening out with friends or quick bite on the run, you'll find great variety and a friendly atmosphere at Wetaskiwin's restaurants.



DINING

Castle Restaurant

4810A-50 Avenue
P: 780-352-1774

Fresh Grill Kitchen & Bar

5001-50 Avenue
P: 780-368-2319

Huckleberry's Café

3840-56 Street
P: 780-352-3111

Mitchell's Cafe

4808-50 Avenue
P: 780-368-2229

O'Brians

**(Best Western
Wayside Inn)**

4103-56 Street
P: 780-312-7300

Pho and Rice

- Vietnamese Cuisine
5216-50 Avenue
P: 780-352-5444

Seoul Restaurant

**- Korean & Japanese
Cuisine**
4912-50 Street
P: 780-362-1245

Smitty's Family Restaurant

4610-56 Street
P: 780-352-7272

The Glens Grill

4911-51 Street
P: 780-352-9596

Wetaskiwin Diner

4820-50 Street
P: 780-368-2250

CHINESE FOOD

Hong & Sandy's Family Restaurant

5015-50 Avenue
P: 780-352-5098

Mega Restaurant

5433-55 Avenue
P: 780-352-3848

Red Rose Family Restaurant

5208-50 Avenue
P: 780-352-8550

Sing & Kim's Family Restaurant

5530-48 Avenue
P: 780-352-8987

The Twin Dragon

3765-56 Street
P: 780-352-2208

Wok & Roll

4817-49 Street
P: 780-352-7812

BAKERIES & CAFÉS

Beans Coffee

Bar & Bistro

#114 - 4814-56 Street

P: 780-352-3200

Don's Restaurant and Café Ltd.

4915-50 Street

P: 780-352-2483

Bitz n' Bites Bistro

105, 5220 48 Ave

P: 780-362-1875

Java Junction

4707-40 Avenue

(Wetaskiwin Co-op)

P: 780-352-9121

Runway Lunch

5505-50 Avenue

P: 780-352-2286

Starbucks (Safeway)

3901-56 Street

P: 780-352-2041

The Other Side Café

5205-49 Avenue

P: 780-352-7543

The Skillet

4915-50 Street

P: 780-468-0340

PIZZA

2 For 1 Family Pizza

4502-56 Street

P: 780-352-8895

Angelo's Pizza and Pasta

5009-50 Avenue

P: 780-352-7714

Boston Pizza

5527A-49 Avenue

P: 780-352-9235

Chicago Deep Dish Pizza

4803-50 Avenue

P: 780-352-8171

Cosmic Pizza

4820B-50 Street

P: 780-361-0006

Domino's Pizza

4802-56 Street

P: 780-368-3444

Mama's Pizza

5008-50 Avenue

P: 780-352-3340

Pizza Hut

Highway 2A South

3750-56 Street

P: 780-310-1010

PUBS, BARS & GRILLS

Barney's Pub and Grill

4103-56 Street (Best
Western Wayside Inn)
P: 780-312-7300

Cornerstone Pub and Grill

4503-56 Street
P: 780-352-8881

Legion Canteen

5003-52 Avenue
P: 780-352-2662

Overtime Lounge (Bowling Alley)

5013-49 Street
P: 780-352-4705

Slick's Motorsports Bar and Grill

4615-50 Street
P: 780-352-4604

FAST FOOD

7-Eleven

4003-56 Street
P: 780-352-7777

A&W

5517-47 Avenue
P: 780-352-6516

Dairy Queen

4411-56 Street
P: 780-352-7000

ELJ Store

4905-49 Street
P: 780-352-2900

Extreme Pita

4814-56th Street
P: 780-335-0040

Subway

4009-56 St
P: 780-352-5023
112-4802-56 St
P: 780-368-3080

KFC

3830-56 Street
P: 780-352-7919

McDonalds

5517-37A Avenue
P: 780-352-9186
3600-56 Street (Wal-Mart)
P: 780-352-6790

Tim Horton's

4914-56 St P: 780-352-8484
3600-56 St P: 780-352-7100

Wendy's

4912-56 Street
P: 780-352-9350

Wetaskiwin Beef and Bun/ Yogen Fruz

4701-56 Street
(Esso on the Run)
P: 780-368-3331

EXCITING EXCURSIONS



If you like a unique experience, enjoy urban life, are a cultural explorer, like to take a trip back in time, or a real relaxer, Wetaskiwin offers it all! Whether you are here for three hours, a full day, a weekend, or just visiting friends & relatives there is plenty to see and do in our City.

Family Outings

- Loonstock Music Festival or the Rawhide Rodeo
- Enjoy 44,756 sq. ft. of pure "Watertainment" at the Manluk Centre
- NASCAR racing goes every Saturday night at the Edmonton International Raceway (in Wetaskiwin)
- Take the kids to "Ice Cream Day" at the Railway Museum
- Golf at the Montgomery Glen Golf & Country Club, Pipestone Golf and Loon Golf Courses
- By-the-Lake Park offers bird watching, fishing, picnic areas, trails for biking, running, walking and skating in the winter.

Thrill Seekers

- Drive a race car around Alberta's only 1/4 mile PAVED Oval in a 10 lap stock car test drive or take in Saturday night NASCAR racing.
- Feel the wind on your face from the seat of an open cockpit biplane
- "Catch the WAVE" and "Feel the Excitement" on the Manluk Centre BoardRider Surf System and Waterslides

Open Cockpit Biplane Adventures

You've always wanted to take this flight, so what are you waiting for? This flight for one or two passengers is a rare opportunity. So bring your sense of adventure, put on your helmet (we provide one), get airborne, and enjoy a scenic view of the world below.

1. Barnstormer's Best - \$139.00 + GST (10 min)
2. Coal Lake Tours - \$199.00 + GST (20 min)
3. Pigeon Lake Tour - \$409.00 + GST (50 min)

Flights leave from the Aviation Hangar at the Reynolds-Alberta Museum and can be purchased on site. Flights are weather permitting, so it is always best to call the museum ahead of your planned day with us.

History Buffs

- Celebrate the "Spirit of the Machine" at Reynolds-Alberta Museum with their rare collection of cars, airplanes, tractors and industrial machines
- At Canada's Aviation Hall of Fame pay tribute to more than 200 men and women who pioneered and advanced aviation in Canada
- View one of the oldest water tower's in Canada and the tallest structure in the city
- Visit the Peace Cairn commemorating peace between the Cree and Blackfoot Nations of the Wetaskiwin area
- Experience our history with our self-directed downtown walking tour.
- Stop at the Wetaskiwin and District Heritage Museum & Uncover local heritage and history.

Urban Experience

- Shop in our many unique stores and seek out the hidden gems throughout the city
- Enjoy a cup of coffee at a speciality coffee shop while listening to a local musician
- Dine in one of our local restaurants offering mouth-watering local favorites
- Spend a couple hours in a local spa, a tattoo shop or novelty shops

VISITORS INFORMATION



Wanting to know more about our fine city, or just need to know a good place to eat or shop, stop at our Visitor Information Centre where knowledgeable staff will guide you in the right direction. Conveniently located across from the 140' water tower...you can't miss it.



City Hall

4705-50 Avenue
P: 780-361-4400
www.wetaskiwin.ca

RCMP Station

5005-48 Avenue
P: 780-312-7267 / 911

Wetaskiwin Hospital

6910-47 Street
P: 780-361-7100

Wetaskiwin Regional Airport

6301-47 Avenue
P: 780-352-5858
E: airport@wetaskiwin.ca
www.wetaskiwin.ca

Visitor Information Centre

4910-55A Street
P: 780-361-4417
E: community@wetaskiwin.ca
www.wetaskiwin.ca

BANKS

ATB Financial

5202-50 Avenue
780-352-7300

Bank of Montreal

5020-50 Avenue
780-352-3317

CIBC

5213-50 Avenue
780-352-3355

ENCOMPASS

Credit Union

5111-50 Avenue
780-352-2251

RBC

4916-50 Avenue
780-352-6011

Scotiabank

3725-56 Street
780-352-9261

TD Canada Trust

5002-50 Avenue
780-361-5201

HOSPITAL/CLINICS

Wetaskiwin Hospital

6910-47 Street
P: 780-361-7100

Associate Clinic

5215-49 Avenue

Community Clinic

5108-50 Avenue

Tower Professional Centre

5520-50 Avenue

Wetaskiwin Family Medical Practice

5107-50 Street

*Walk-in clinics are available at one or all of the above clinics Monday - Friday

DRUG STORES

Wetaskiwin Family Pharmacy

5101-50 Street

Town and Country Pharmacy

5104-50 Avenue

Safeway Pharmacy

3905-56 Street

Shoppers Drug Mart

4825-50 Street

Value Drug Mart

5215A – 50 Avenue

Walmart Pharmacy

#300, 3600-56 Street

AMENITIES/SERVICES

LAUNDROMATS

Bestway Laundry

#101, 5710-47 Street

Snappy Cleaners

Coin Laundromat

5405-40 Avenue

Wetaskiwin Motel Laundromat

4705-56 Street

DRY CLEANERS

Mountain Spring Cleaners

4902-50 Street
780-352-4355

Snappy Cleaners & Tailors

5409 - 40 Avenue
780-368-2393

RV FILL STATION

Wetaskiwin Fill Station

5707-51 Street
(requires toonies or loonies)

RV DUMPING STATIONS

Lions Campground

2.4 km east of junction
Highway 2A and 13 east
No fee for registered
guests

Wetaskiwin Sani Dump Station

5707-51 Street
Free of charge

GAS STATIONS

7-Eleven

4003-56 Street

Esso On the Run

4710-56 Street

Esso (south)

5526-37A Avenue

Fas Gas Plus

4909-49 Street

Petro Canada

5020-56 Street
4003-56 Street

Shell

4411-56 Street

Wetaskiwin Husky Market

3915-56 Street

UFA Card Lock

4805-40 Avenue

Co-op Card Lock

4707-40 Avenue



Electric Charging Station (accessible 24 hours)
4705-50 Avenue

CAR WASHES

Auto Mile Car Wash
5506-37A Avenue

Spruce View Car Wash
5620-56 Street

Husky Market
3915-56 Street

**Wetaskiwin Car
and Truck Wash**
4805-57 Street

**Super Care
Lube & Wash**
3760-56 Street

GROCERY

No Frills
5217-50 Avenue

Wetaskiwin Co-op Foods
4703-50 Street

Safeway
3905-56 Street

Wal-Mart Super Centre
3725-56 Street

PUBLIC WASHROOMS

Visitor Information Centre
4910-55A Street

By-the-Lake Park
6128-56 Avenue

Wetaskiwin Public Library
5002-51 Avenue

OUR SINCERE APPRECIATION TO ALL
THE LOCAL PHOTOGRAPHERS WHO
HAVE PROVIDED THEIR PHOTOS FOR
USE IN OUR GUIDE.

- Ron Asp
- Phyllis Cleland
- Dan Frederickson
- Sarmiali Stabner
- Karen Schatschneider
- Dean McMurrer

Wetaskiwin Top Five

Favorites: As voted by local residents

Favorite restaurants:

1. Huckleberry's Cafe
2. Seoul
3. Castle
4. Fresh Grill
5. Barney's

Things you must see in Wetaskiwin:

1. Reynolds Museum
2. By-the-Lake Park
3. Manluk Centre
4. The Water Tower
5. The Heritage Museum

Favorite things to do in Wetaskiwin in the summer:

1. Walk or bike at By the Lake Park
2. Walk or hike at Peace Hills Park
3. Swim at the Manluk Centre
4. Attend events around Wetaskiwin
5. Go to the International Raceway

Favorite places to shop in Wetaskiwin:

1. Tied: Farmer's Market, Coaches Source for Sports, Mark's Work Wearhouse and Wal-Mart
5. Value Drug Mart

Favorite things to do in Wetaskiwin on a Saturday:

1. Swimming or skating
2. The Farmer's Market
3. Go to a movie
4. Shopping
5. Bowling

Favorite thing to do outdoors in Wetaskiwin:

1. Bike/walk on the trails around Wetaskiwin
2. Go to By-the-Lake Park
3. Visit a playground
4. Golf
5. Take in a festival

Favorite 'kid-tastic' activities:

1. Manluk Centre
2. The play place at Justice Cafe
3. By-the-Lake Park
4. Winter Carnival
5. Summer events in the City

There are so many other experiences when visiting Wetaskiwin.

- **THE MANLUK CENTRE**
"Catch the Wave" and "Feel the Excitement!"
Swim, slide or surf on the Board Rider – the only one of its kind in North America;
- **ALBERTA-REYNOLDS MUSEUM**
Experience the "Spirit of the Machine" through an outstanding collection of cars, airplanes, tractors and industrial machines or soar to new heights of adventure in a vintage 1930's open-cockpit biplane;
- **EDMONTON INTERNATIONAL RACEWAY**
in Wetaskiwin - sign up to do a 10 lap stock car test drive, "literally" NASCAR racing every Saturday night;
- **THE CANADIAN AVIATION HALL OF FAME**
Pay tribute to more than 200 men and women recognized for pioneering and advancing Canadian aviation;
- **CITY OF WETASKIWIN HISTORIC DOWNTOWN**
Stroll through Wetaskiwin on a self-guided walking tour where you will learn about the richness of Wetaskiwin's heritage;
- **WETASKIWIN & DISTRICT HERITAGE MUSEUM**
Where history never gets old;
- **ALBERTA RAILWAY MUSEUM**
Board the vintage 1926 passenger coach, and experience historic train travel;
- **GOLF COURSES**
Perfect for the seasoned golfer, the weekend duffer and for those just picking up the sport;
- **DINING**
Satisfy your craving and choose from one of many local restaurants. Excite your taste buds with fusions of flavour and hearty comfort food.

1 Calendar Wetaskiwin

Bringing our Community Together

1Calendar.Wetaskiwin is THE local on-line calendar where it is FREE to post events, activities and programs; and to SEARCH and discover what is happening in and around Wetaskiwin on any given day

HOW IT WORKS

1. SEARCH EVENTS
2. POST EVENTS
3. SUBSCRIBE TO EVENTS

IT'S EASY & IT'S FREE!!

Arts &
Culture

Chamber &
Business

Civic

Community

Sports &
Recreation

www.1calendar.wetaskiwin.ca

1Calendar.Wetaskiwin acknowledges the following partners



city of

Wetaskiwin

Visit us on:

www.wetaskiwin.ca

www.facebook.com/wetaskiwin

www.manlukcentre.ca

www.facebook.com/manlukcentre

www1Calendar.wetaskiwin.ca

Visitor Information Centre

4910-55A Street

P: 780-361-4417

E: community@wetaskiwin.ca

www.wetaskiwin.ca

Getting Here:

35 minutes south of Edmonton (QEII)

2 hours north of Calgary (QEII)

20 minutes east of Pigeon Lake (Hwy 13)